



MONTHLY MEMBERSHIP PROGRESS REPORT

District 19 A

Results as of: 4/30/2017

GMT: DENNIS STEVENSON

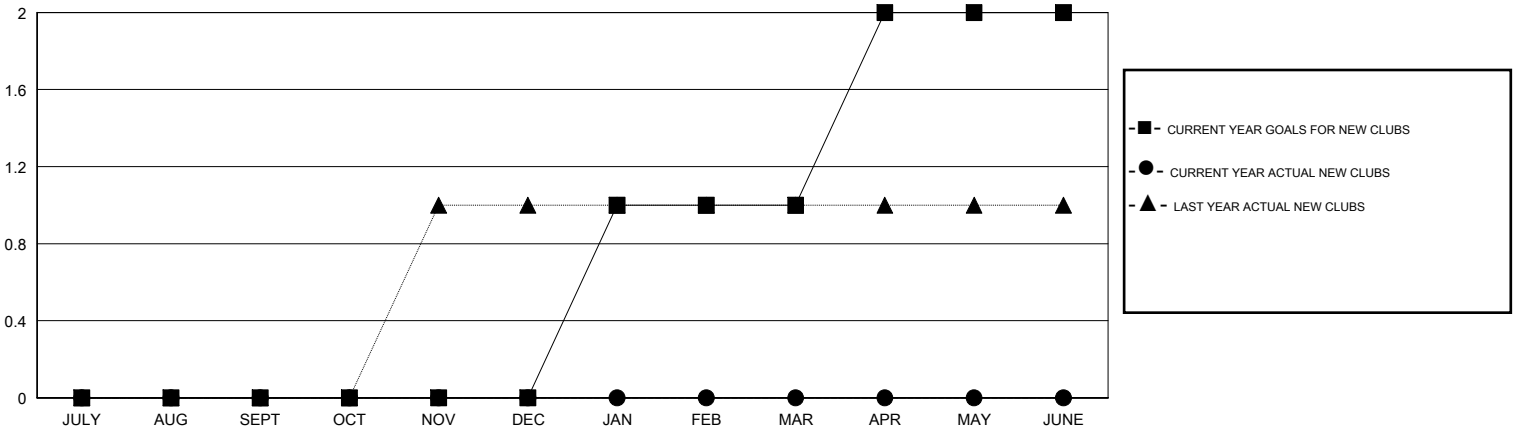
LOCATION BRITISH COLUMBIA

GMT CA

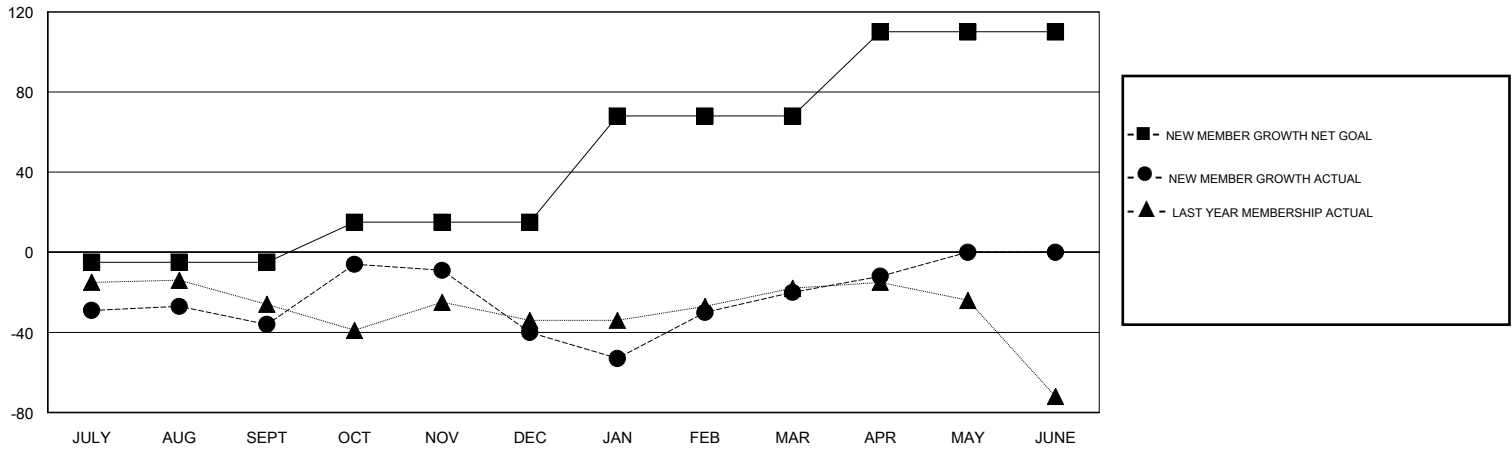
Clubs			
RESULTS FOR 2016-2017			
QUARTER	NEW CLUB GOAL	NEW CLUBS	DROPPED CLUBS
JULY/AUG/SEPT	0	0	1
OCT/NOV/DEC	0	0	1
JAN/FEB/MAR	1	0	0
APR/MAY/JUNE	1	0	0

Members			
RESULTS FOR 2016-2017			
QUARTER	NEW MEMBER GROWTH NET GOAL (not reinstated or transfers)	NEW MEMBER GROWTH ACTUAL (not reinstated or transfers)	DROPPED MEMBERS ACTUAL (including transfers)
JULY/AUG/SEPT	-5	34	70
OCT/NOV/DEC	20	53	57
JAN/FEB/MAR	53	56	36
APR/MAY/JUNE	42	14	6

GOALS AND ACTUAL NEW CLUBS CUMULATIVE



GOALS AND ACTUAL MEMBERS CUMULATIVE



DROPPED CLUBS: 2	34 CLUBS OF 59 ADDED 1 OR MORE NEW MEMBERS	<u>GENDER DISTRIBUTION</u>
DROPPED MEMBERS	CLICK HERE FOR CUMULATIVE MEMBERSHIP DATA	MALE 622 (55.59%)
DECEASED 5		FEMALE 497 (44.41%)
CLUB CANCELLED 19		TOTAL FAMILY UNIT MEMBERS 83
OTHER 143		FAMILY MEMBERS PAYING HALF DUES 43
TOTAL 167		